



1



2



3



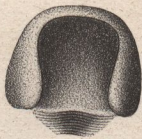
4



5



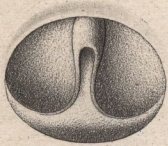
6



7



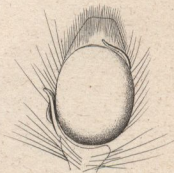
8



9



10



11

Fig. 1.



Fig. 2.



Fig. 3.



Fig. 4.

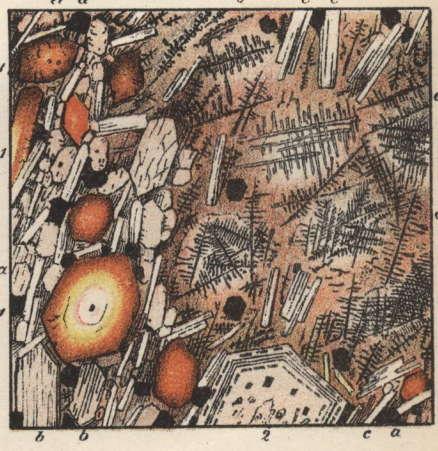


Fig. 5.



Fig. 6.



H. Möhl. ad. nat. del.

Lith. v. F. Wiegärtner, Görlitz.

Abhandlungen der naturforschenden Gesellschaft zu Görlitz.



Sohle des Bruches

DF H.Möhl. Die Basalte der Tr. Oberlausitz (Taf II).

H.Möhl. and nat del. et lith.